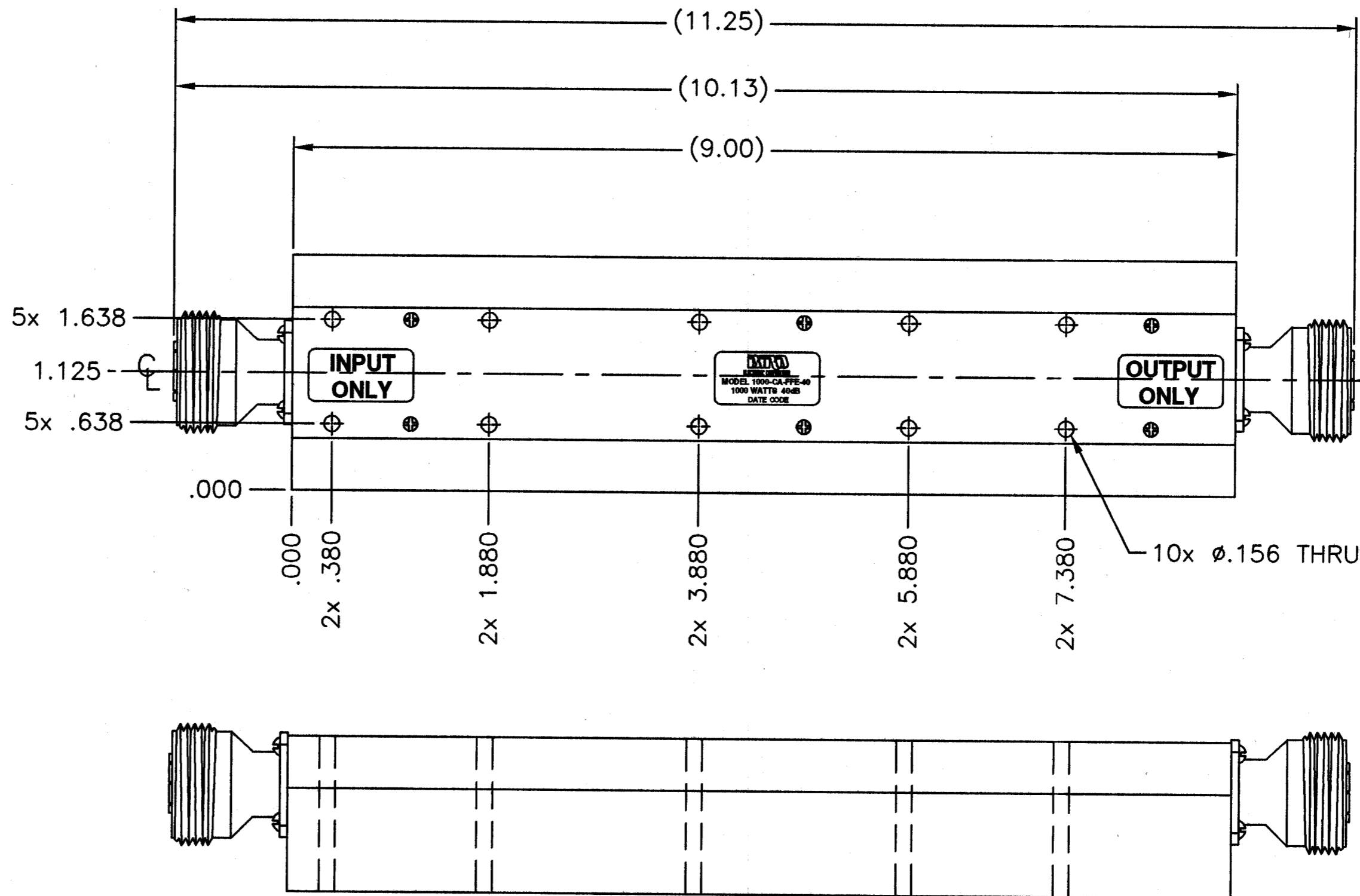
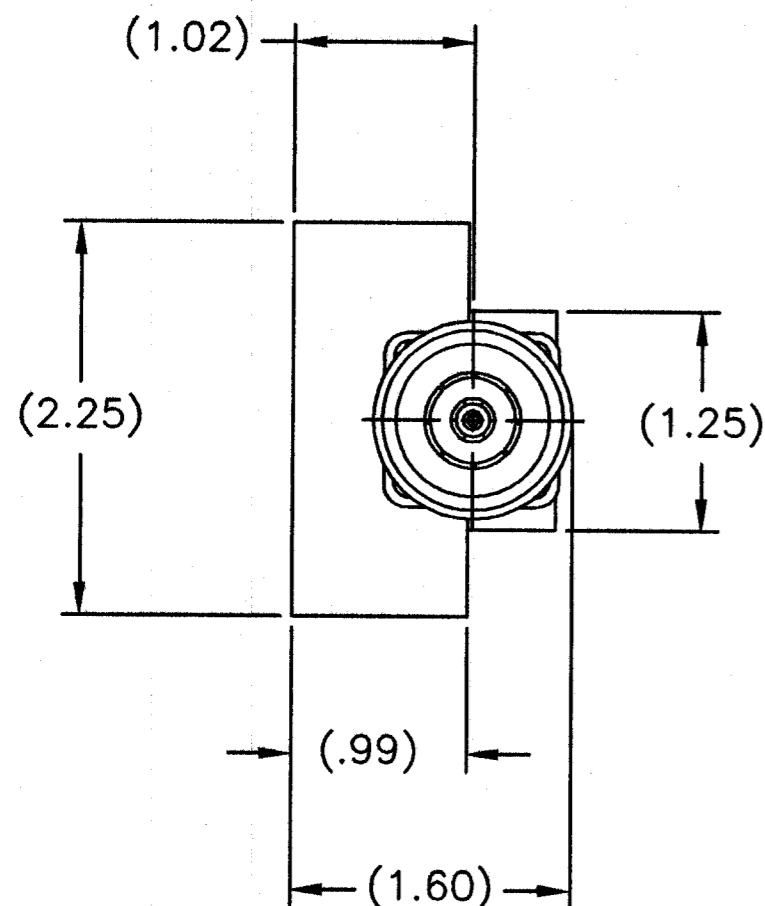


SPECIFICATIONS:

- FREQUENCY RANGE: 470 TO 860 MHz
- INPUT POWER: 1000W AVG., 4000W PEAK (PEAK SIGNALS CONSIST OF RANDOMLY OCCURRING PULSES OF 100ns IN DURATION)
- ATTENUATION: 40dB ±.5dB
- IMPEDANCE: 50 OHMS NOMINAL
- VSWR: 1.20:1 MAX. OVER THE FREQUENCY RANGE
- COOLING: ATTENUATOR MUST BE MOUNTED TO A HEAT SINK CAPABLE OF MAINTAINING A 100°C. CASE TEMPERATURE AT 1000W AVG. INPUT POWER
- CONNECTORS: IEC 7/16 FEMALE
- LABELING: LABELED WITH NOMINAL ATTENUATION (40dB)
- MATERIALS: ALUMINUM BASE AND COVER
- FINISH: SILVER PLATED BASE, IRRIDATED COVER

REVISIONS		DWG. NO.	SHEET	REV
ZONE	REV	DESCRIPTION	DATE	APPROVED
A		CONVERT TO BEC FORMAT	DMR	2-3-03
				<i>MBJ</i>



DIMENSIONS HEREON ARE FOR CUSTOMER CONVENIENCE AND REFERENCE ONLY. TOLERANCE TO BE APPLIED ONLY WHERE INDIVIDUALLY STATED ON THE RESPECTIVE DIMENSION. -DO NOT SCALE DRAWING-

UNLESS OTHERWISE SPECIFIED DIMENSIONS ARE IN INCHES TOLERANCES ARE:		MILLIMETERS X= ±.4 XX= ±.12		THIS DRAWING IS THE PROPERTY OF THE BIRD ELECTRONIC CORPORATION. THE DESIGNS AND SPECIFICATIONS DISCLOSED HEREON ARE PROPRIETARY AND SHALL NOT BE REPRODUCED, NOR COPIED, NOR USED AS THE BASIS FOR THE MANUFACTURE OR SALE OF APPARATUS OR DEVICES WITHOUT THEIR EXPRESS WRITTEN CONSENT.			
FRACTIONS ± 1/64	DECIMALS XXX= ±.005	ANGLES ± 30'	DO NOT SCALE DRAWING				
MATERIAL	APPROVALS	DATE	TITLE				
	D.M.RINK	2-3-03	ATTENUATOR, CONDUCTION COOLED FEMALE IEC 7/16, 40dB, 1000W				
FINISH	CHECKED	APPROVED	SIZE	FSCM NO.	DWG. NO.	REV	
		<i>MBJ</i>	C	70998	1000-CA-FFE-40	A	
			SCALE	1:1	COMM CODE	AT1	
			AUTOCAD		SHEET	1 OF 1	

